

# eWAVE MD

## Enhancing M-Health Services

eWaveMD Telemedicine Solution for Ethiopia - A Practical Approach

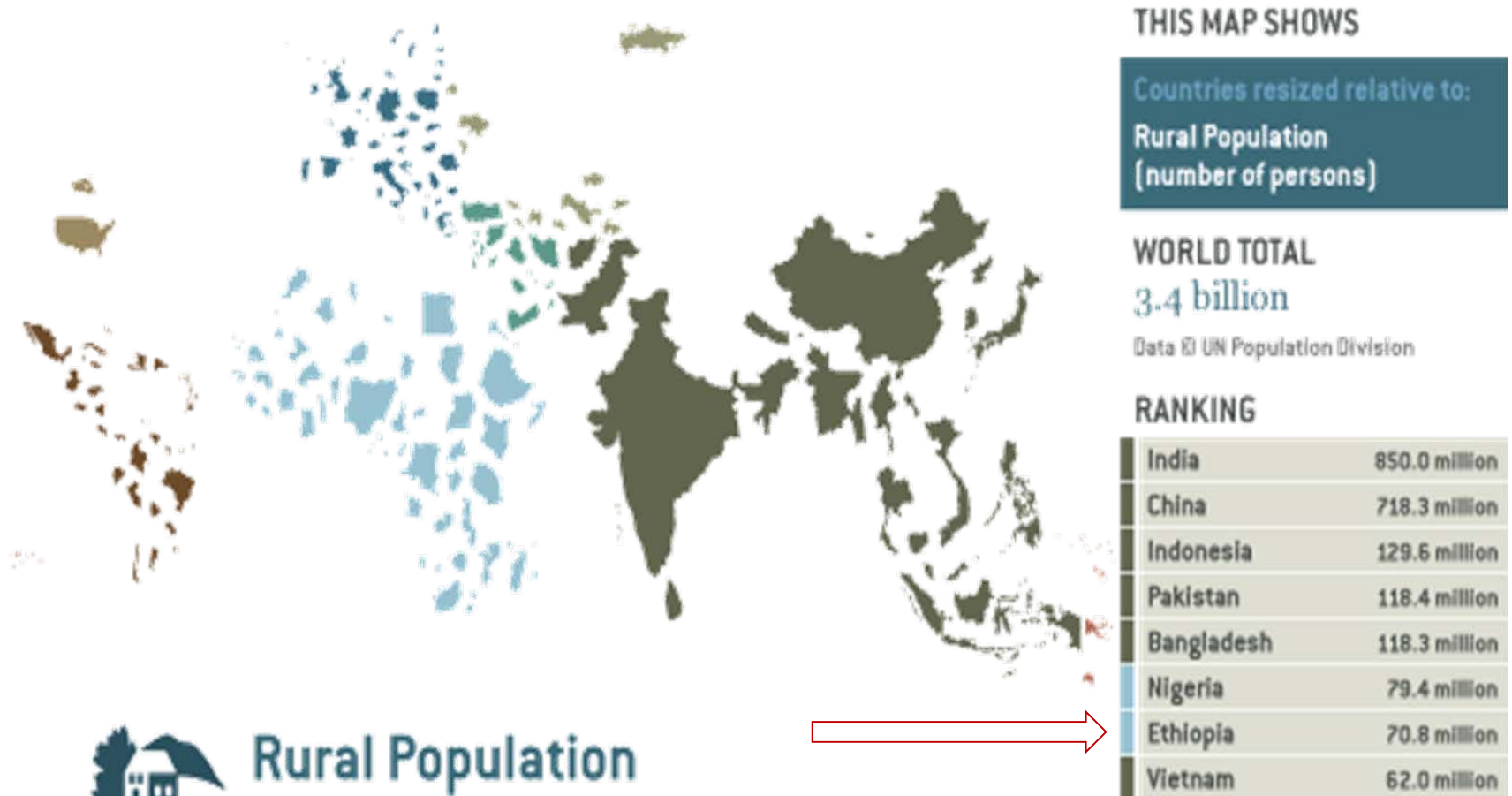
April 2012

Ido Tsalka,  
Product Manager  
eWave MD



# Rural Population - World Status

3.4 billion people live in rural environments with minimal or no Healthcare infrastructure



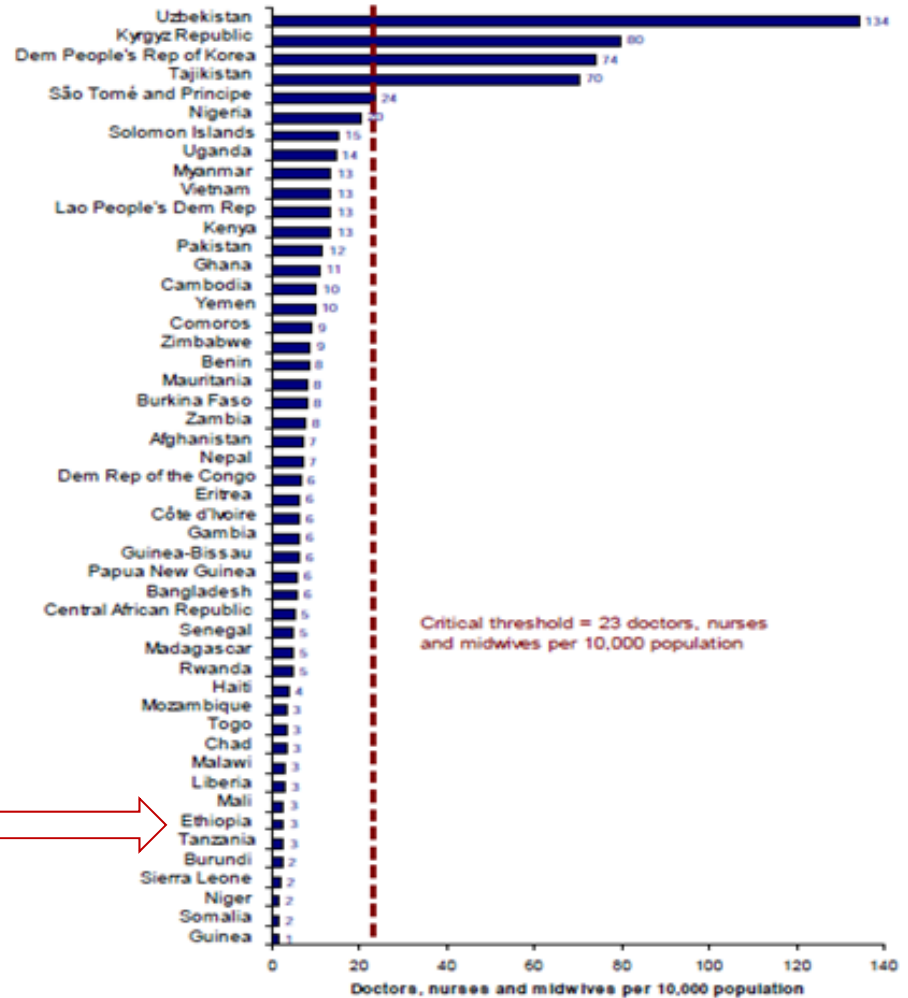
# Ethiopia



# RURAL HEALTH STATUS

- Public health systems fail to deliver basic health services
- Lack of infrastructures
- Shortage of qualified medical personnel
- Wide target area with limited accessibility
- Unskilled manpower

Density of doctors, nurses and midwives in the 49 priority countries



Source: WHO Global Atlas of the Health Workforce

August 2010

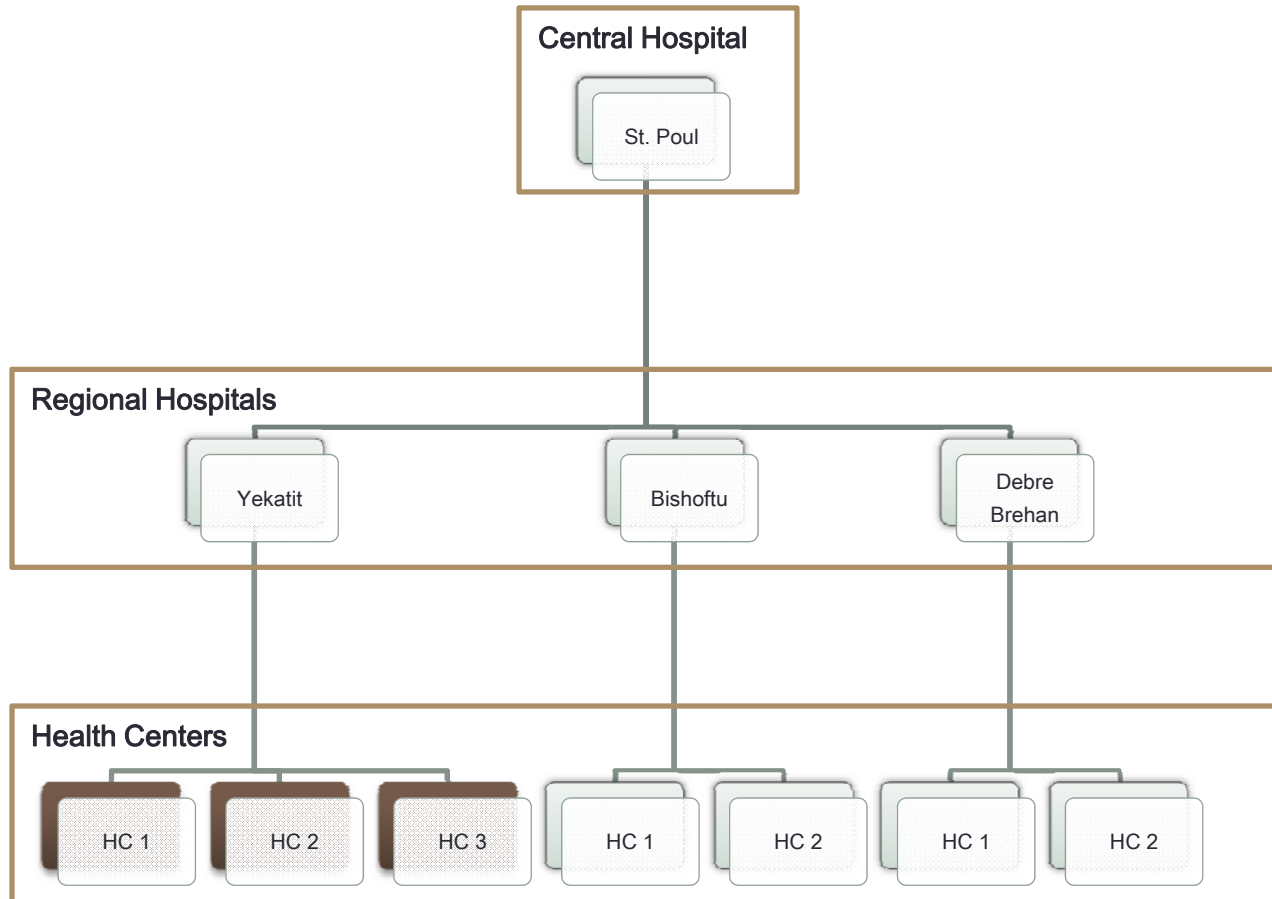
# The Need

Create a new Healthcare delivery Channel

# Pilot Overview

- The Pilot consists of 10 remote locations, deployed gradually, all in the Addis Ababa area, using the ARTEC™ stations to receive primary care remote consultation.
- The consultation is provided by doctors in St. Paul central hospital in Addis Ababa.
- The Pilot is scheduled to run for a period of 6 months in the above setup.
- Each location has a dedicated location manager that is in charge that the station is operated on a continuous basis.

# Pilot Deployment Structure



# On Going Training And Education

- Training Modalities

- Addis (Central) training for all by eWaveMD
- On-Site Training at Rural Locales by Ethiopians (via train-the-trainer model)
- Video Based Training

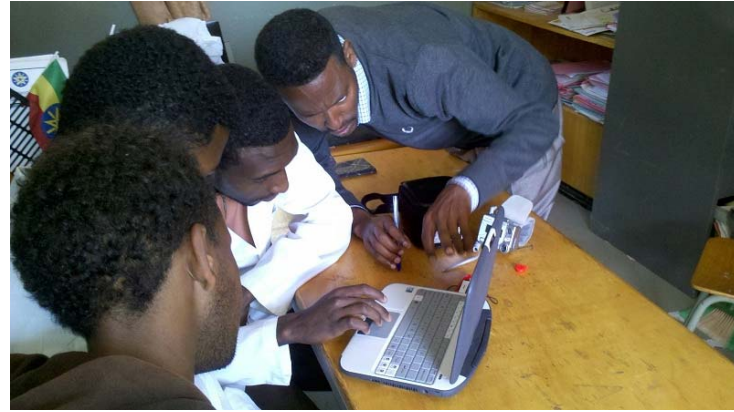


- E-learning and community generated content production

- Integrate Intel's SKOOOL Healthcare Education Platform
- Digitise Educational Content for Field Workers to receive further education via e-learning
- Encourage care providers to produce amateur videos on how they are taking care of their patients by obtaining patient consent
- Film all workshops (technical or patient care related)
- Load these videos to Skool Platform and share with other healthcare workers



# Hands-on Experience



**Thank you!**